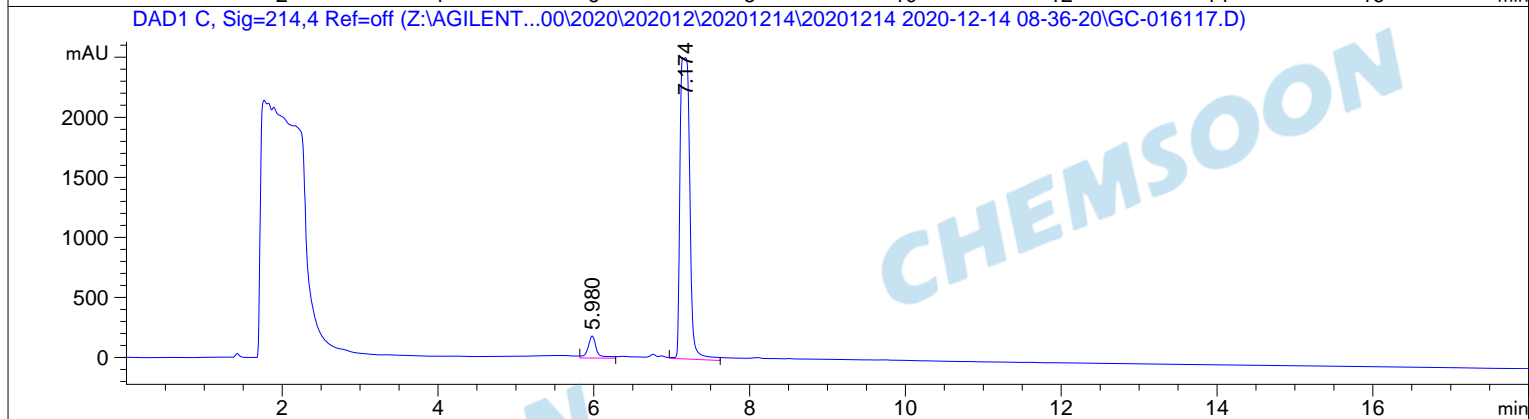
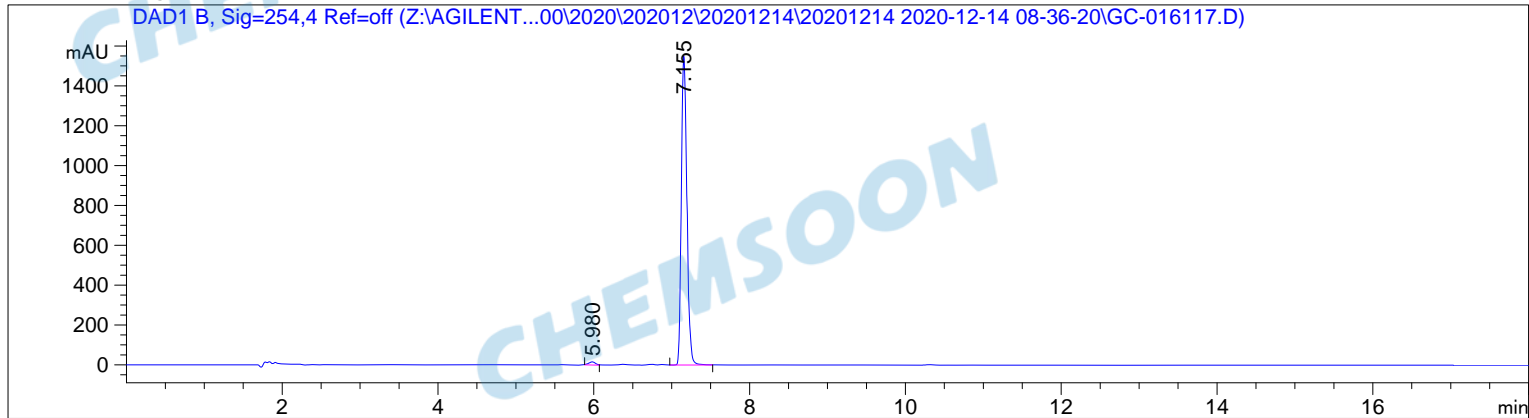


```

=====
Acq. Operator   : 系统                               Seq. Line :   40
Acq. Instrument : Agilent 1200                       Location  : Vial 38
Injection Date  : 12/15/2020 12:09:28 AM            Inj       :    1
                                                    Inj Volume: 5.000 µl
Acq. Method     : D:\DATA\2020\202012\20201214\20201214 2020-12-14 08-36-20\HPLC-1200-A3.M
Last changed    : 12/14/2020 9:02:58 AM by 系统
Analysis Method : C:\CHEM32\1\METHODS\DEF_LC.M
Last changed    : 11/20/2006 6:14:44 PM
  
```



=====
 Area Percent Report
 =====

```

Sorted By      :      Signal
Multiplier:    :      1.0000
Dilution:      :      1.0000
Use Multiplier & Dilution Factor with ISTDs
  
```

Signal 1: DAD1 B, Sig=254,4 Ref=off

Peak #	RetTime [min]	Type	Width [min]	Area [mAU*s]	Height [mAU]	Area %
1	5.980	MM R	0.1008	96.51334	15.96020	1.2394
2	7.155	VB	0.0778	7690.88330	1552.90210	98.7606

Totals : 7787.39664 1568.86230

Signal 2: DAD1 C, Sig=214,4 Ref=off

Peak #	RetTime [min]	Type	Width [min]	Area [mAU*s]	Height [mAU]	Area %
1	5.980	VV	0.1149	1435.67590	184.23013	6.1768
2	7.174	MM R	0.1384	2.18073e4	2509.32935	93.8232

Totals : 2.32430e4 2693.55948

=====
*** End of Report ***

CHEMSOON

CHEMSOON

CHEMSOON

CHEMSOON

CHEMSOON

CHEMSOON