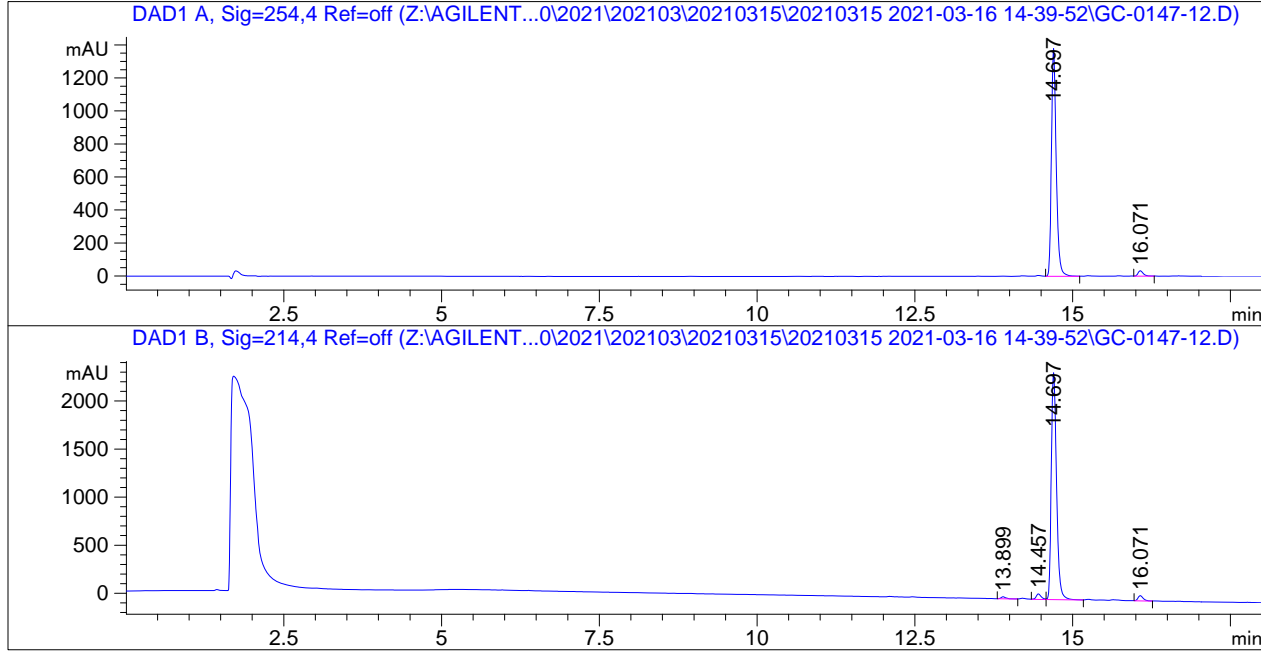


```

=====
Acq. Operator   : 系统                               Seq. Line :    2
Acq. Instrument : Agilent 1200                       Location  : Vial 12
Injection Date  : 3/16/2021 3:09:01 PM              Inj       :    1
                                                    Inj Volume: 5.000 µl
Different Inj Volume from Sequence !      Actual Inj Volume : 3.000 µl
Acq. Method    : D:\DATA\2021\202103\20210315\20210315 2021-03-16 14-39-52\HPLC-1200-A2.M
Last changed   : 3/16/2021 2:39:52 PM by 系统
Analysis Method : C:\CHEM32\1\METHODS\DEF_LC.M
Last changed   : 3/16/2021 11:29:04 AM
                (modified after loading)
=====
  
```



Area Percent Report

```

Sorted By      :      Signal
Multiplier:    :      1.0000
Dilution:      :      1.0000
Use Multiplier & Dilution Factor with ISTDs
  
```

Signal 1: DAD1 A, Sig=254,4 Ref=off

Peak #	RetTime [min]	Type	Width [min]	Area [mAU*s]	Height [mAU]	Area %
1	14.697	VB	0.0794	7255.86279	1379.74365	97.4635
2	16.071	VB	0.0870	188.83241	32.89520	2.5365

Totals : 7444.69521 1412.63885

Signal 2: DAD1 B, Sig=214,4 Ref=off

Peak #	RetTime [min]	Type	Width [min]	Area [mAU*s]	Height [mAU]	Area %
1	13.899	VV	0.0880	130.85555	21.80820	0.9082
2	14.457	VV	0.0822	315.32532	57.26694	2.1885
3	14.697	VV	0.0894	1.36406e4	2359.91309	94.6736

Peak #	RetTime [min]	Type	Width [min]	Area [mAU*s]	Height [mAU]	Area %
4	16.071	VV	0.0879	321.24707	55.21173	2.2296

Totals : 1.44081e4 2494.19997

=====
*** End of Report ***