

CS014735

$^1\text{H NMR}$  (400 MHz,  $\text{dms}\text{-}d_6$ )  $\delta$  7.07 (s, 2H), 6.81 (d,  $J = 8.1$  Hz, 8H), 6.41 (d,  $J = 8.5$  Hz, 8H), 4.98 (s, 8H).

7.07  
6.82  
6.80  
6.42  
6.40

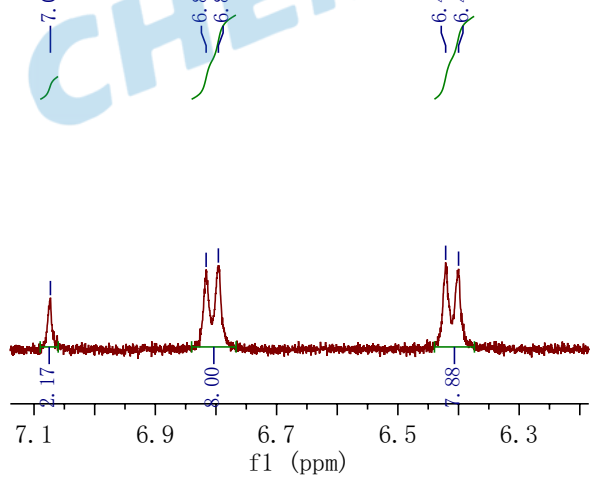
4.98

3.32

2.48

-0.02

CS014735



2.17  
8.00  
7.88

7.79

